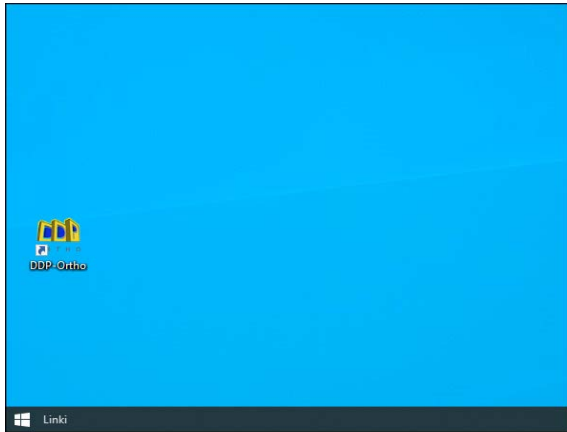
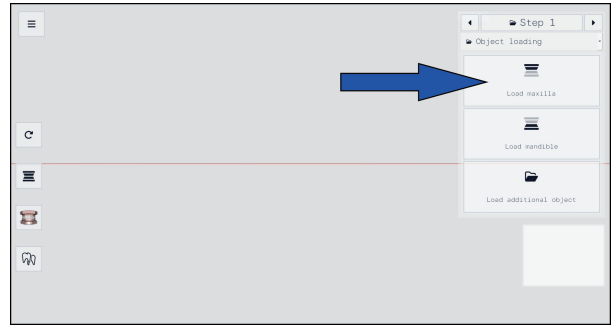


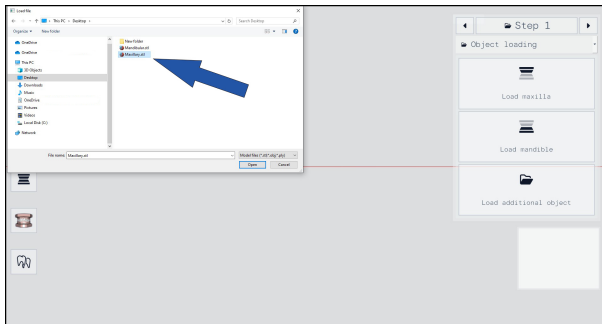
1 Open the DDP - Ortho software.



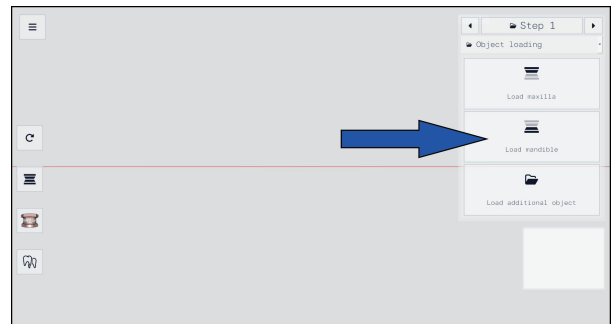
2 Load maxilla.



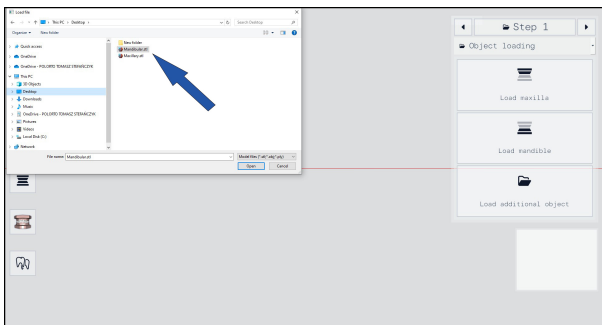
3 In the new window, find the location of the file which you want to open.



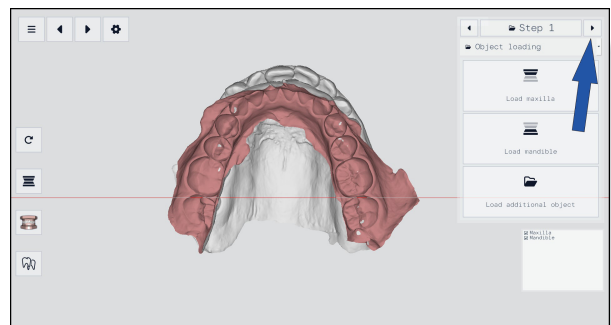
4 Load mandible.



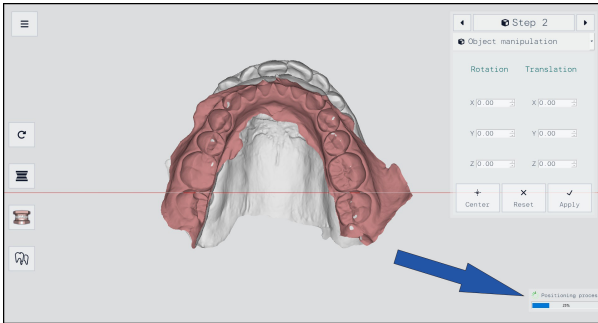
5 In the new window, find the location of the file which you want to open.



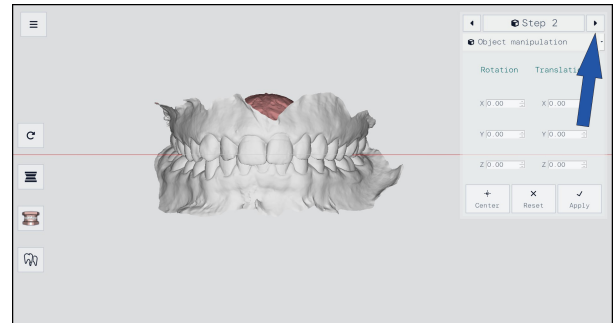
6 Once the model is loaded, use the arrow to go to step 2.



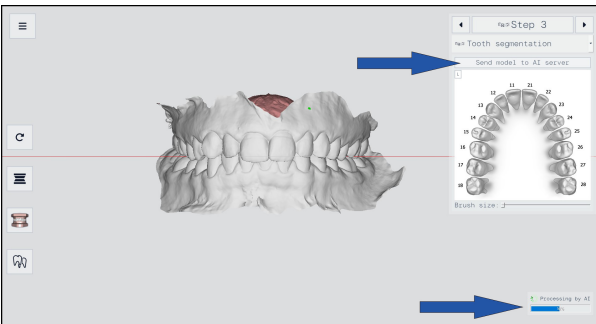
7 Wait until the AI finish positioning model



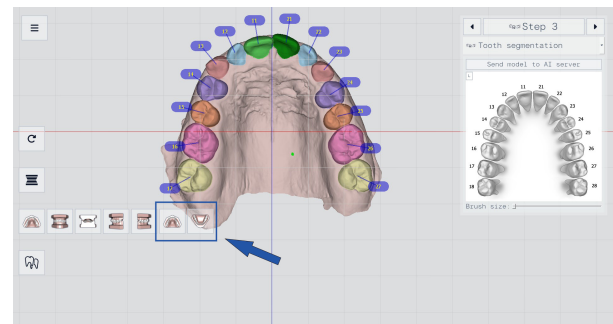
8 Once the model is positioned correctly, go to step 3.



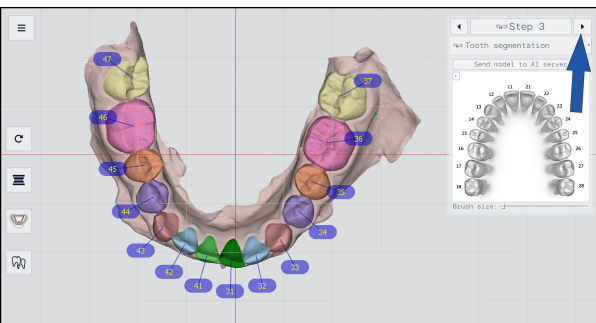
9 Press the "Send model to AI server" button and wait for the AI to finish segment the teeth.



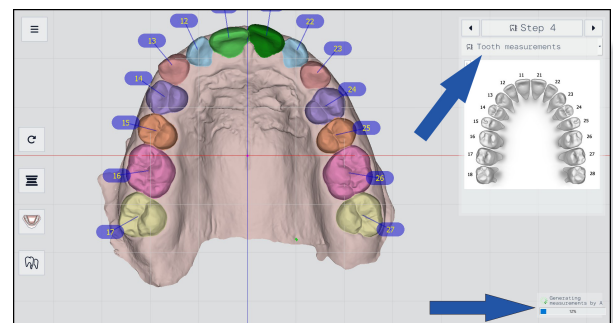
10 Check the correct segmentation of the teeth: labels and outlines.



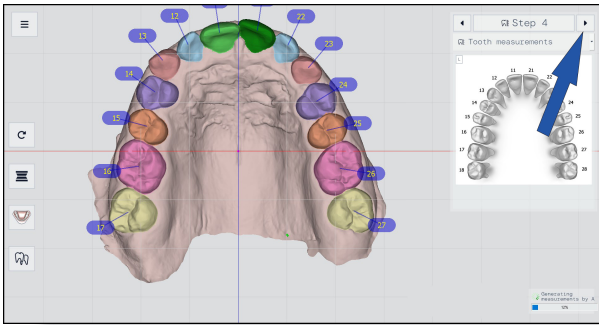
11 Next use the arrow to go to step 4.



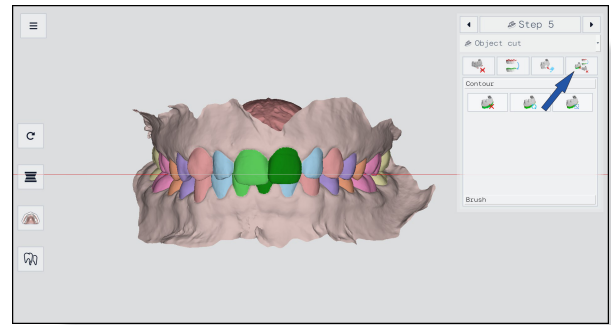
12 Use "Tooth measurements". Wait for the AI to finish measure your teeth.



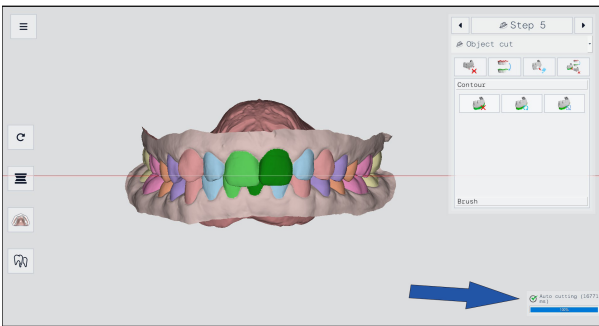
13 Next use the arrow to go to step 5.



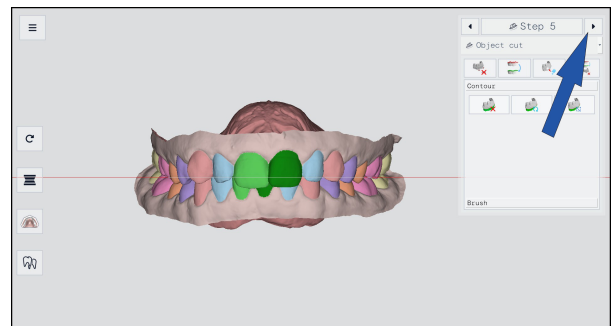
14 In step 5, use "automatic cut" button to cut soft tissue.



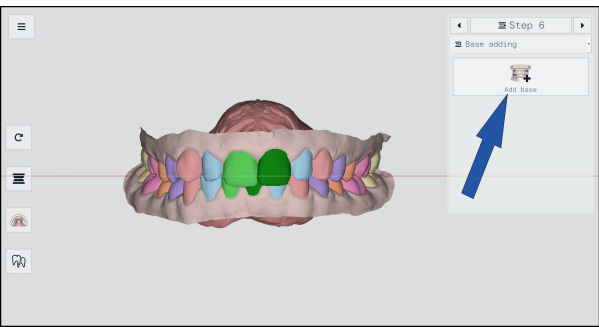
15 Wait until the AI finishes trimming.



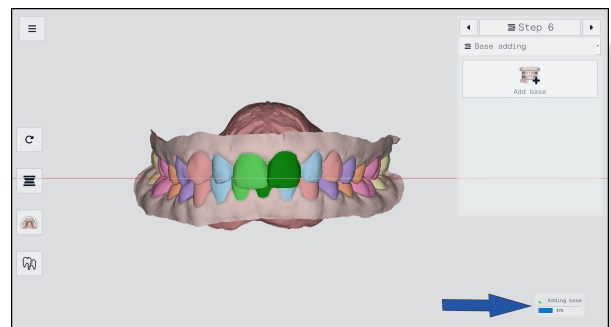
16 Next use the arrow to go to step 6.



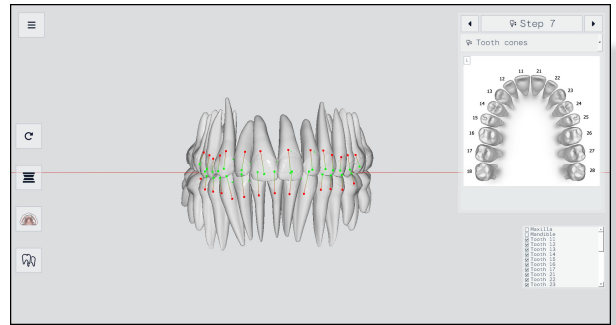
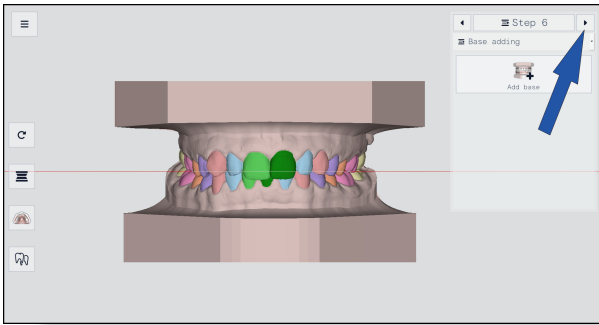
17 Press the "Add base" button to add bases to the model.



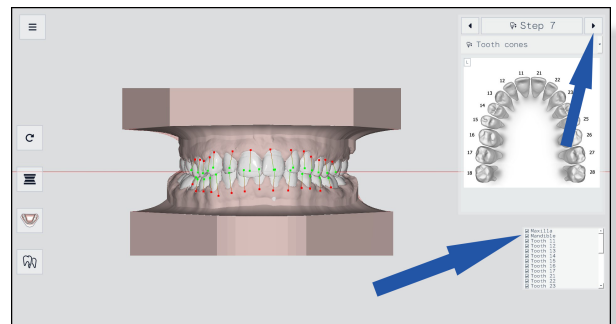
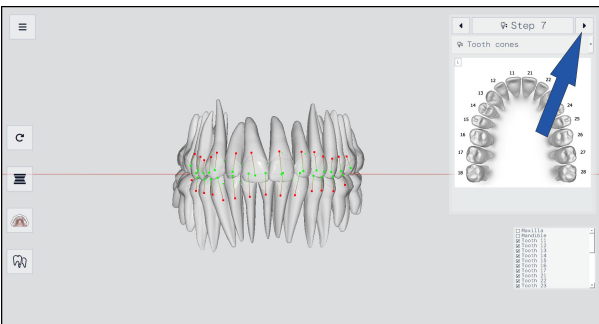
18 Wait for the AI to finish adding bases.



- 19** Next use the arrow to go to step 7. → **20** Wait for the AI to create the roots.



- 21** Check for collision between roots. → **22** Check the integrity of the roots and soft tissue. Use the arrow to go to step 8.



- 23** Click the "Export" button to export the file. → **24** Please check your email and download the model from the link provided.

